

Reynolds Rd between Borden St and Cedar Hill X Rd

November 23, 2020 To November 27, 2020



The data presented here is for information purposes only and should not be considered authoritative for construction, geotechnical, engineering, navigational, legal, or other site-specific uses. The information shared is owned by the Transportation Division of the Engineering Department at the District of Saanich. Accuracy is not guaranteed.

Start Date: 23-Nov-20
 Start Time: 22:01
 Station ID: C0058-01

Location 1: Reynolds Rd between Borden St and Cedar Hill X Rd

Note:

DATE:	November 23, 2020		November 24, 2020		November 25, 2020		November 26, 2020		November 27, 2020		WK AVG		WK AVG	HOURLY
	MON		TUE		WED		THURS		FRI		EB	WB	CH 1+2	%
Time:	EB	WB	EB	WB	EB	WB	EB	WB	EB	WB	EB	WB		
12-1 AM			3	3	7	11	3	12			4	9	13	0.2%
1-2 AM			0	2	6	6	4	5			3	4	8	0.1%
2-3 AM			4	6	1	4	3	2			3	4	7	0.1%
3-4 AM			1	3	3	2	2	3			2	3	5	0.1%
4-5 AM			0	2	1	4	0	7			0	4	5	0.1%
5-6 AM			8	12	6	18	4	15			6	15	21	0.4%
6-7 AM			16	68	19	71	23	67			19	69	88	1.6%
7-8 AM			66	209	70	193	80	217			72	206	278	5.1%
8-9 AM			137	405	130	391	142	399			136	398	535	9.8%
9-10 AM			85	241	104	220	112	246			100	236	336	6.1%
10-11 AM			112	250	89	225	114	240			105	238	343	6.3%
11-12 PM			136	248	134	252	124	268			131	256	387	7.1%
12-1 PM			136	318	119	240	147	298			134	285	419	7.6%
1-2 PM			115	302	117	294	124	301			119	299	418	7.6%
2-3 PM			178	325	149	335	129	362			152	341	493	9.0%
3-4 PM			113	427	157	414	184	466			151	436	587	10.7%
4-5 PM			148	325	148	360	148	344			148	343	491	9.0%
5-6 PM			102	276	107	279	107	272			105	276	381	6.9%
6-7 PM			58	158	58	174	67	182			61	171	232	4.2%
7-8 PM			63	107	47	107	56	115			55	110	165	3.0%
8-9 PM			30	71	41	73	39	97			37	80	117	2.1%
9-10 PM			23	57	26	54	32	44			27	52	79	1.4%
10-11 PM	13	21	20	35	16	26	16	36			16	30	46	0.8%
11-12 AM	8	16	13	17	16	22	6	20			11	19	30	0.5%
LANES			1567	3867	1571	3775	1666	4018			1599	3883	5482	100.0%
TOTAL			5434		5346		5684				5490			
	MON		TUE		WED		THURS		FRI		WK AVG			

PEAK HOUR					TOTAL VEHICALS-PEAK PERIODS		2 HOUR PEAK INTERVALS						
MAX. 7 - 9 am PEAK HOUR	535	⇒	9.8%	between 8-9 AM	2492	⇒	6 HR TOTAL	2 HR AM (7 - 9 AM)					
MAX. 7 - 11 am PEAK HOUR	535	⇒	9.8%	between 8-9 AM	1685	⇒	4 HR TOTAL	VEH / HR	VEH / 2HR	2 HR %			
MAX. 11 am - 1 pm PEAK HOUR	419	⇒	7.6%	between 12-1 PM					7-8 AM	278	813	14.8%	
MAX. 11 am - 3 pm PEAK HOUR	493	⇒	9.0%	between 2-3 PM					8-9 AM	535			
MAX. 4 - 6 pm PEAK HOUR	491	⇒	9.0%	between 4-5 PM					2 HR NOON (11 - 1 PM)				
MAX. 3 - 6 pm PEAK HOUR	587	⇒	10.7%	between 3-4 PM					VEH / HR	VEH / 2HR	2 HR %		
									11-12 PM	387	807	14.7%	
									12-1 PM	419			
									2 HR PM (4 - 6 PM)				
									VEH / HR	VEH / 2HR	2 HR %		
									4-5 PM	491	872	15.9%	
									5-6 PM	381			

Reynolds Rd between Borden St and Cedar Hill X Rd

Westbound

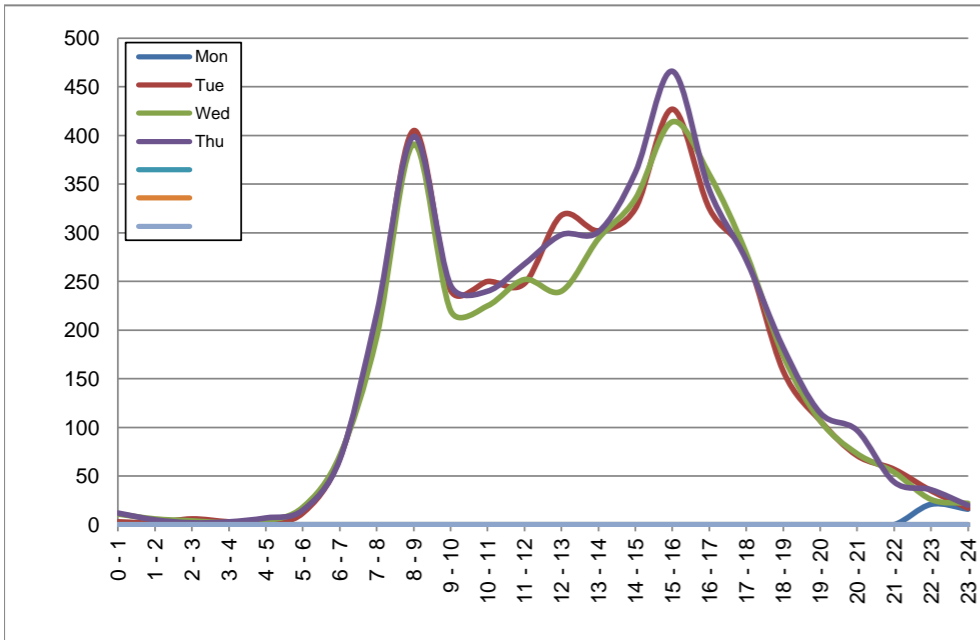
November 23, 2020 to November 26, 2020

Hourly Volumes

Time Period	Mon	Tue	Wed	Thu			
	Nov 23	Nov 24	Nov 25	Nov 26			
0 - 1		3	11	12			
1 - 2		2	6	5			
2 - 3		6	4	2			
3 - 4		3	2	3			
4 - 5		2	4	7			
5 - 6		12	18	15			
6 - 7		68	71	67			
7 - 8		209	193	217			
8 - 9		405	391	399			
9 - 10		241	220	246			
10 - 11		250	225	240			
11 - 12		248	252	268			
12 - 13		318	240	298			
13 - 14		302	294	301			
14 - 15		325	335	362			
15 - 16		427	414	466			
16 - 17		325	360	344			
17 - 18		276	279	272			
18 - 19		158	174	182			
19 - 20		107	107	115			
20 - 21		71	73	97			
21 - 22		57	54	44			
22 - 23	21	35	26	36			
23 - 24	16	17	22	20			
Day Total		3867	3775	4018			

15-Minute Volumes

Time Start	Mon	Tue	Wed	Thu			
	Nov 23	Nov 24	Nov 25	Nov 26			
0:00		0	4	3			
0:15		2	4	4			
0:30		0	0	2			
0:45		1	3	3			
1:00		1	1	0			
1:15		0	3	2			
1:30		1	1	1			
1:45		0	1	2			
2:00		1	1	1			
2:15		1	1	1			
2:30		2	2	0			
2:45		2	0	0			
3:00		0	0	0			
3:15		0	0	1			
3:30		1	1	0			
3:45		2	1	2			
4:00		0	1	3			
4:15		1	1	2			
4:30		1	0	0			
4:45		0	2	2			
5:00		2	2	2			
5:15		1	4	4			
5:30		5	4	5			
5:45		4	8	4			
6:00		9	9	11			
6:15		7	11	16			
6:30		22	23	15			
6:45		30	28	25			
7:00		32	26	37			
7:15		46	41	47			
7:30		66	53	64			
7:45		65	73	69			
8:00		84	86	71			
8:15		93	94	109			
8:30		113	100	101			
8:45		115	111	118			
9:00		80	79	80			
9:15		51	51	44			
9:30		52	37	60			
9:45		58	53	62			
10:00		61	41	54			
10:15		69	65	61			
10:30		60	50	60			
10:45		60	69	65			
11:00		47	55	53			
11:15		52	56	71			
11:30		73	67	67			
11:45		76	74	77			
12:00			92	72	69		
12:15			60	54	73		
12:30			90	61	78		
12:45			76	53	78		
13:00			78	66	70		
13:15			65	70	79		
13:30			84	79	74		
13:45			75	79	78		
14:00			63	79	84		
14:15			75	67	71		
14:30			78	85	94		
14:45			109	104	113		
15:00			110	108	100		
15:15			104	90	120		
15:30			117	115	133		
15:45			96	101	113		
16:00			80	98	78		
16:15			96	88	104		
16:30			75	93	85		
16:45			74	81	77		
17:00			72	73	78		
17:15			84	91	76		
17:30			62	54	75		
17:45			58	61	43		
18:00			47	42	53		
18:15			53	53	44		
18:30			31	35	49		
18:45			27	44	36		
19:00			36	30	42		
19:15			30	25	24		
19:30			20	33	31		
19:45			21	19	18		
20:00			27	28	37		
20:15			17	20	27		
20:30			16	17	24		
20:45			11	8	9		
21:00			16	18	16		
21:15			19	13	9		
21:30			16	14	9		
21:45			6	9	10		
22:00	8	8	4	12			
22:15	4	9	8	8			
22:30	4	10	9	12			
22:45	5	8	5	4			
23:00	7	8	8	10			
23:15	5	3	6	6			
23:30	3	3	4	4			
23:45	1	3	4	0			



Site notes:

Reynolds Rd between Borden St and Cedar Hill X Rd

Eastbound

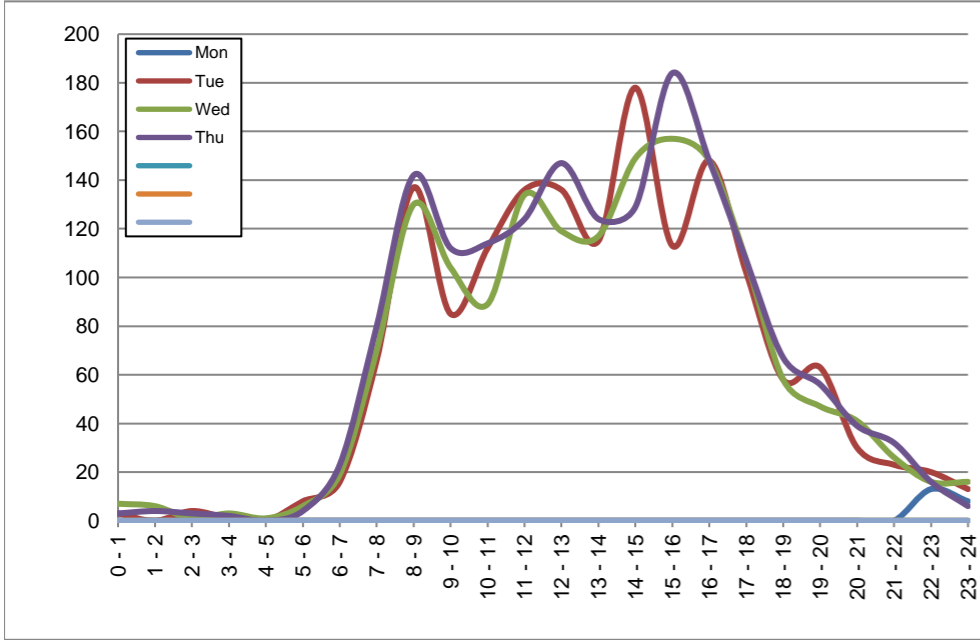
November 23, 2020 to November 26, 2020

Hourly Volumes

Time Period	Mon	Tue	Wed	Thu			
	Nov 23	Nov 24	Nov 25	Nov 26			
0 - 1		3	7	3			
1 - 2		0	6	4			
2 - 3		4	1	3			
3 - 4		1	3	2			
4 - 5		0	1	0			
5 - 6		8	6	4			
6 - 7		16	19	23			
7 - 8		66	70	80			
8 - 9		137	130	142			
9 - 10		85	104	112			
10 - 11		112	89	114			
11 - 12		136	134	124			
12 - 13		136	119	147			
13 - 14		115	117	124			
14 - 15		178	149	129			
15 - 16		113	157	184			
16 - 17		148	148	148			
17 - 18		102	107	107			
18 - 19		58	58	67			
19 - 20		63	47	56			
20 - 21		30	41	39			
21 - 22		23	26	32			
22 - 23	13	20	16	16			
23 - 24	8	13	16	6			
Day Total		1567	1571	1666			

15-Minute Volumes

Time Start	Mon	Tue	Wed	Thu				Time Start	Mon	Tue	Wed	Thu			
	Nov 23	Nov 24	Nov 25	Nov 26					Nov 23	Nov 24	Nov 25	Nov 26			
0:00		2	2	0				12:00		40	31	42			
0:15		0	3	1				12:15		29	25	33			
0:30		0	1	1				12:30		38	39	36			
0:45		1	1	1				12:45		29	24	36			
1:00		0	0	0				13:00		27	34	34			
1:15		0	3	2				13:15		34	25	25			
1:30		0	0	1				13:30		24	23	35			
1:45		0	3	1				13:45		30	35	30			
2:00		0	1	1				14:00		40	23	37			
2:15		2	0	0				14:15		45	38	28			
2:30		1	0	1				14:30		51	38	27			
2:45		1	0	1				14:45		42	50	37			
3:00		1	1	0				15:00		34	45	45			
3:15		0	1	1				15:15		32	45	38			
3:30		0	0	0				15:30		20	31	50			
3:45		0	1	1				15:45		27	36	51			
4:00		0	0	0				16:00		37	30	40			
4:15		0	0	0				16:15		41	34	42			
4:30		0	1	0				16:30		35	44	34			
4:45		0	0	0				16:45		35	40	32			
5:00		2	1	0				17:00		30	30	31			
5:15		1	2	0				17:15		21	27	28			
5:30		3	1	2				17:30		28	28	22			
5:45		2	2	2				17:45		23	22	26			
6:00		4	2	4				18:00		15	17	20			
6:15		4	5	4				18:15		19	13	16			
6:30		2	2	7				18:30		12	15	16			
6:45		6	10	8				18:45		12	13	15			
7:00		18	12	12				19:00		20	14	15			
7:15		8	15	17				19:15		17	14	17			
7:30		17	24	23				19:30		14	8	10			
7:45		23	19	28				19:45		12	11	14			
8:00		24	30	19				20:00		6	14	10			
8:15		34	32	38				20:15		12	10	12			
8:30		38	34	41				20:30		6	7	9			
8:45		41	34	44				20:45		6	10	8			
9:00		19	32	34				21:00		10	6	9			
9:15		21	27	22				21:15		6	8	6			
9:30		23	15	19				21:30		7	7	13			
9:45		22	30	37				21:45		0	5	4			
10:00		28	19	25				22:00	3	4	4	2			
10:15		28	20	35				22:15	5	6	5	2			
10:30		33	19	38				22:30	1	6	3	5			
10:45		23	31	16				22:45	4	4	4	7			
11:00		34	23	21				23:00	0	5	7	4			
11:15		30	46	31				23:15	3	4	4	2			
11:30		38	34	33				23:30	2	3	1	0			
11:45		34	31	39				23:45	3	1	4	0			



Site notes:

Vehicle Speed Summary

Saanich Engineering Department

Count Id: C0058-01

Filename: Reynolds Rd between Borden St and Cedar Hill X Rd-Nov-2020.xlsm

Location: Reynolds Rd between Borden St and Cedar Hill X Rd

Note:

Direction: **East-West**

Dates: **November 23, 2020 To November 27, 2020**

Filtered data

AVG. SPEED	24 mph	39 km/h
50 % SPEED	24 mph	39 km/h
85 % SPEED	30 mph	48 km/h
95 % SPEED	32 mph	52 km/h

Location Map



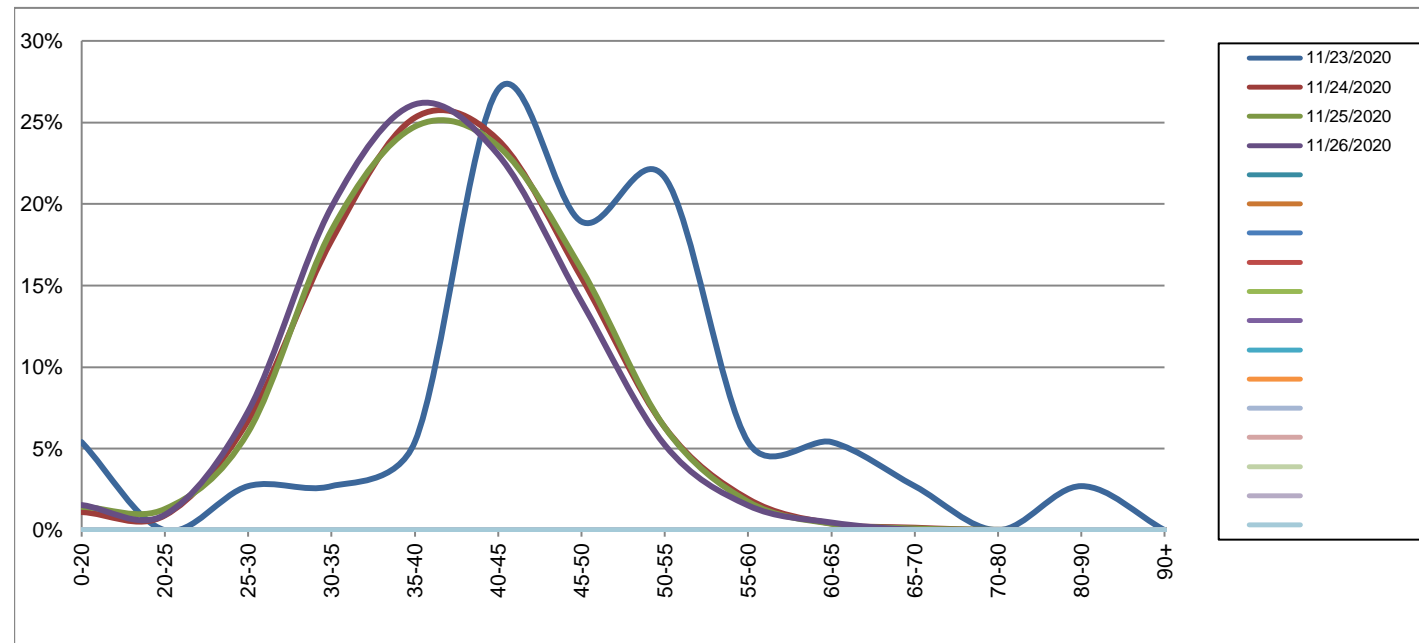
Reynolds Rd between Borden St and Cedar Hill X Rd

Westbound
November 23, 2020 to November 26, 2020

Daily Speed Bin Percentages															Daily Speed Bin Volumes														Total	Avg.
Bin #	1	2	3	4	5	6	7	8	9	10	11	12	13	14	1	2	3	4	5	6	7	8	9	10	11	12	13	14	Volume	Speed
Bin Speeds	0-20	20-25	25-30	30-35	35-40	40-45	45-50	50-55	55-60	60-65	65-70	70-80	80-90	90+	0-20	20-25	25-30	30-35	35-40	40-45	45-50	50-55	55-60	60-65	65-70	70-80	80-90	90+		
11/23/2020	5.4%	0.0%	2.7%	2.7%	5.4%	27.0%	18.9%	21.6%	5.4%	5.4%	2.7%	0.0%	2.7%	0.0%	2	0	1	1	2	10	7	8	2	2	1	0	1	0	37	47
11/24/2020	1.1%	0.9%	6.7%	17.8%	25.3%	23.9%	15.5%	6.3%	1.9%	0.4%	0.2%	0.0%	0.0%	0.0%	43	35	260	687	978	925	599	244	74	16	6	0	0	0	3867	40
11/25/2020	1.4%	1.3%	6.0%	18.4%	24.7%	23.5%	16.0%	6.3%	1.7%	0.4%	0.1%	0.0%	0.0%	0.0%	54	49	227	694	934	889	604	238	66	15	4	1	0	0	3775	40
11/26/2020	1.5%	0.9%	7.3%	19.8%	26.1%	23.0%	14.0%	5.2%	1.5%	0.5%	0.0%	0.0%	0.0%	0.0%	62	38	293	796	1049	925	563	210	61	19	1	1	0	0	4018	39
Total	1.4%	1.0%	6.7%	18.6%	25.3%	23.5%	15.2%	6.0%	1.7%	0.4%	0.1%	0.0%	0.0%	0.0%	161	122	781	2178	2963	2749	1773	700	203	52	12	2	1	0	11697	39

Speed Data Summary

Bin #	1	2	3	4	5	6	7	8	9	10	11	12	13	14	Total
Bin Speeds	0-20	20-25	25-30	30-35	35-40	40-45	45-50	50-55	55-60	60-65	65-70	70-80	80-90	90+	
Survey Total	161	122	781	2178	2963	2749	1773	700	203	52	12	2	1	0	11697
% Total	1.4%	1.0%	6.7%	18.6%	25.3%	23.5%	15.2%	6.0%	1.7%	0.4%	0.1%	0.0%	0.0%	0.0%	100%
Accumulated %	1.4%	2.4%	9.1%	27.7%	53.0%	76.5%	91.7%	97.7%	99.4%	99.9%	100.0%	100.0%	100.0%	100%	
Inverse Accum. %	98.6%	97.6%	90.9%	72.3%	47.0%	23.5%	8.3%	2.3%	0.6%	0.1%	0.0%	0.0%	0.0%	0.0%	
Average Speed	39 KM/H														



Site notes:

Reynolds Rd between Borden St and Cedar Hill X Rd

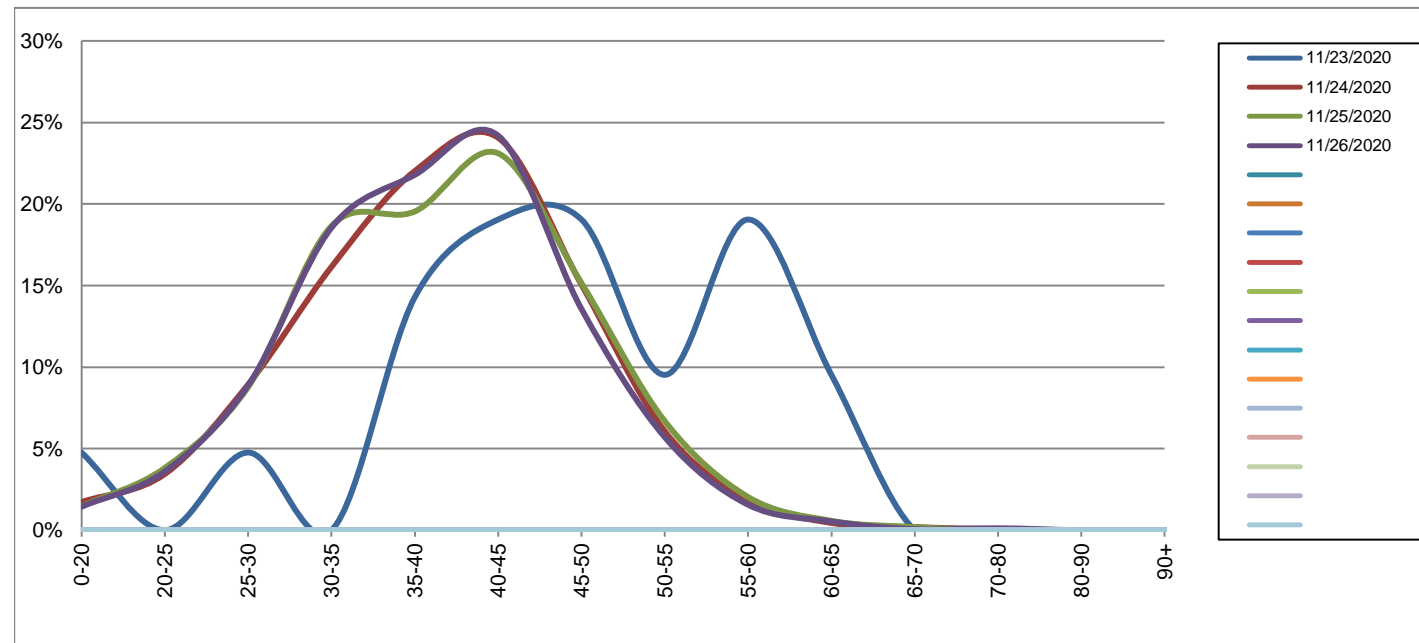
Eastbound

November 23, 2020 to November 26, 2020

Daily Speed Bin Percentages															Daily Speed Bin Volumes														Total	Avg.
Bin #	1	2	3	4	5	6	7	8	9	10	11	12	13	14	1	2	3	4	5	6	7	8	9	10	11	12	13	14	Volume	Speed
Bin Speeds	0-20	20-25	25-30	30-35	35-40	40-45	45-50	50-55	55-60	60-65	65-70	70-80	80-90	90+	0-20	20-25	25-30	30-35	35-40	40-45	45-50	50-55	55-60	60-65	65-70	70-80	80-90	90+		
11/23/2020	4.8%	0.0%	4.8%	0.0%	14.3%	19.0%	19.0%	9.5%	19.0%	9.5%	0.0%	0.0%	0.0%	0.0%	1	0	1	0	3	4	4	2	4	2	0	0	0	0	21	46
11/24/2020	1.7%	3.4%	8.9%	16.1%	22.0%	24.1%	15.1%	6.1%	1.9%	0.4%	0.2%	0.1%	0.0%	0.0%	27	54	140	253	345	377	236	95	29	7	3	1	0	0	1567	39
11/25/2020	1.5%	3.8%	8.8%	18.7%	19.5%	23.1%	15.1%	6.7%	2.0%	0.6%	0.2%	0.0%	0.0%	0.0%	23	60	138	293	307	363	238	105	32	9	3	0	0	0	1571	39
11/26/2020	1.4%	3.6%	8.9%	18.5%	21.8%	24.2%	13.6%	5.7%	1.6%	0.5%	0.1%	0.1%	0.0%	0.0%	24	60	148	309	363	403	226	95	26	9	1	2	0	0	1666	39
Total	1.6%	3.6%	8.8%	17.7%	21.1%	23.8%	14.6%	6.2%	1.9%	0.6%	0.1%	0.1%	0.0%	0.0%	75	174	427	855	1018	1147	704	297	91	27	7	3	0	0	4825	39

Speed Data Summary

Bin #	1	2	3	4	5	6	7	8	9	10	11	12	13	14	Total
Bin Speeds	0-20	20-25	25-30	30-35	35-40	40-45	45-50	50-55	55-60	60-65	65-70	70-80	80-90	90+	
Survey Total	75	174	427	855	1018	1147	704	297	91	27	7	3	0	0	4825
% Total	1.6%	3.6%	8.8%	17.7%	21.1%	23.8%	14.6%	6.2%	1.9%	0.6%	0.1%	0.1%	0.0%	0.0%	100%
Accumulated %	1.6%	5.2%	14.0%	31.7%	52.8%	76.6%	91.2%	97.3%	99.2%	99.8%	99.9%	100.0%	100.0%	100%	
Inverse Accum. %	98.4%	94.8%	86.0%	68.3%	47.2%	23.4%	8.8%	2.7%	0.8%	0.2%	0.1%	0.0%	0.0%	0.0%	
Average Speed	39 KM/H														



Site notes:

Reynolds Rd between Borden St and Cedar Hill X Rd

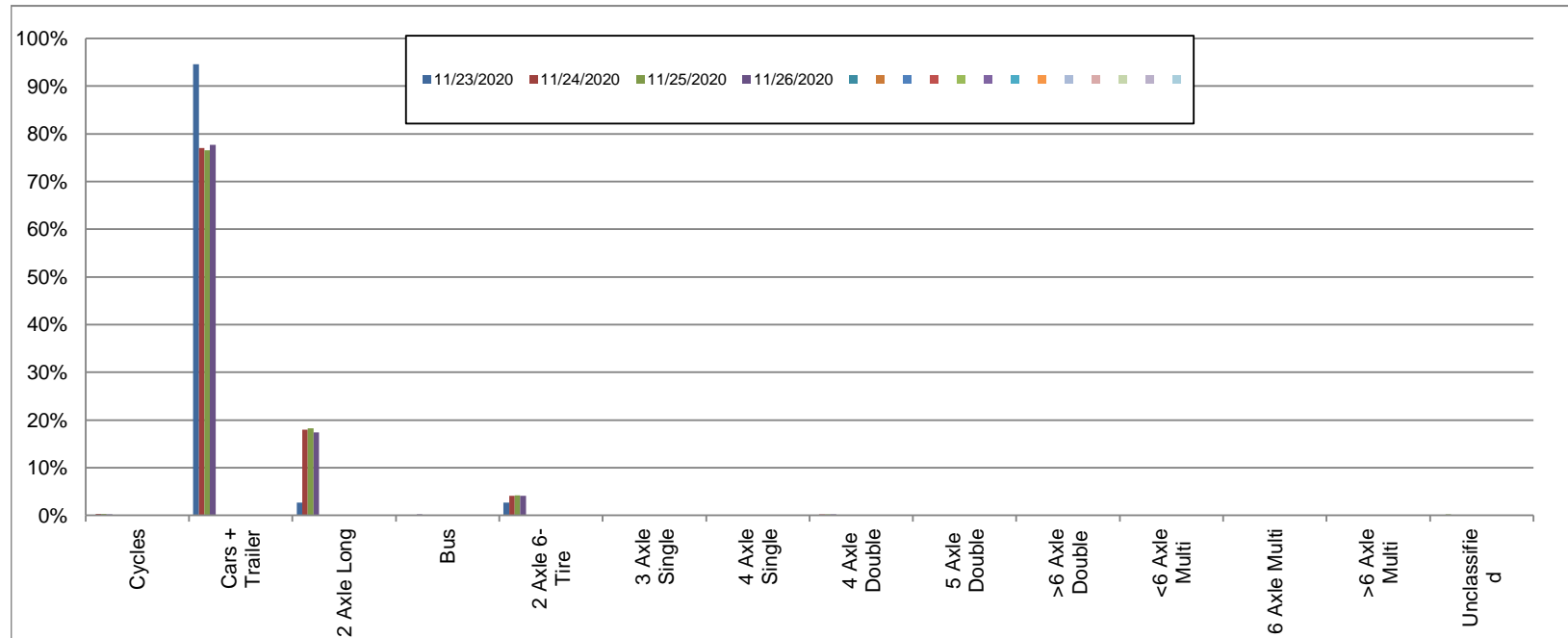
Westbound

November 23, 2020 to November 26, 2020

Daily Class Bin Percentages															Daily Class Bin Volumes														
Bin #	1	2	3	4	5	6	7	8	9	10	11	12	13	14	1	2	3	4	5	6	7	8	9	10	11	12	13	14	Total Volume
Bin Class	Cycles	Cars + Trailer	2 Axle Long	Bus	2 Axle 6-Tire	3 Axle Single	4 Axle Single	4 Axle Double	5 Axle Double	>6 Axle Double	<6 Axle Multi	6 Axle Multi	>6 Axle Multi	Unclassified	Cycles	Cars + Trailer	2 Axle Long	Bus	2 Axle 6-Tire	3 Axle Single	4 Axle Single	4 Axle Double	5 Axle Double	>6 Axle Double	<6 Axle Multi	6 Axle Multi	>6 Axle Multi	Unclassified	
11/23/2020	0.0%	94.6%	2.7%	0.0%	2.7%	0.0%	0.0%	0.0%	0.0%	0.0%	0.0%	0.0%	0.0%	0.0%	0	35	1	0	1	0	0	0	0	0	0	0	0	0	37
11/24/2020	0.3%	77.0%	18.0%	0.2%	4.1%	0.1%	0.0%	0.2%	0.0%	0.0%	0.0%	0.0%	0.0%	0.1%	12	2978	695	6	157	5	0	9	0	0	0	0	0	5	3867
11/25/2020	0.3%	76.5%	18.3%	0.1%	4.2%	0.1%	0.0%	0.2%	0.0%	0.0%	0.0%	0.0%	0.0%	0.2%	12	2889	690	5	157	5	1	9	0	0	0	0	0	7	3775
11/26/2020	0.2%	77.7%	17.4%	0.2%	4.1%	0.1%	0.0%	0.2%	0.0%	0.0%	0.0%	0.0%	0.0%	0.0%	9	3120	700	8	163	6	0	8	2	1	0	0	1	4018	
Total	0.3%	77.1%	17.8%	0.2%	4.1%	0.1%	0.0%	0.2%	0.0%	0.0%	0.0%	0.0%	0.0%	0.1%	33	9022	2086	19	478	16	1	26	2	1	0	0	0	13	11697

Class Data Summary

Bin #	1	2	3	4	5	6	7	8	9	10	11	12	13	14	Total Volume
Bin Class	Cycles	Cars + Trailer	2 Axle Long	Bus	2 Axle 6-Tire	3 Axle Single	4 Axle Single	4 Axle Double	5 Axle Double	>6 Axle Double	<6 Axle Multi	6 Axle Multi	>6 Axle Multi	Unclassified	Total Volume
Survey Total	33	9022	2086	19	478	16	1	26	2	1	0	0	0	13	11697
% Total	0.3%	77.1%	17.8%	0.2%	4.1%	0.1%	0.0%	0.2%	0.0%	0.0%	0.0%	0.0%	0.0%	0.1%	100%
Accumulated %	0.3%	77.4%	95.2%	95.4%	99.5%	99.6%	99.6%	99.9%	99.9%	99.9%	99.9%	99.9%	99.9%	100.0%	
Inv. Accum. %	99.7%	22.6%	4.8%	4.6%	0.5%	0.4%	0.4%	0.1%	0.1%	0.1%	0.1%	0.1%	0.1%	0.0%	



Classification Descriptions

Bin #	Bin Description
1	Motorcycles
2	Passenger cars, including those with recreational trailers
3	2-axle pick-ups, vans, and RVs, including those with recreational trailers
4	Buses
5	2-axle, 6-tire single units
6	3-axle single units
7	4-axle single units
8	3-axle or 4-axle double unit
9	5-axle double unit
10	6-, 7-, or 8-axle double unit
11	5-axle multiple unit
12	6-axle multiple unit
13	7-or-more-axle multiple unit
14	Vehicles that could not be classified

Site notes:

Reynolds Rd between Borden St and Cedar Hill X Rd

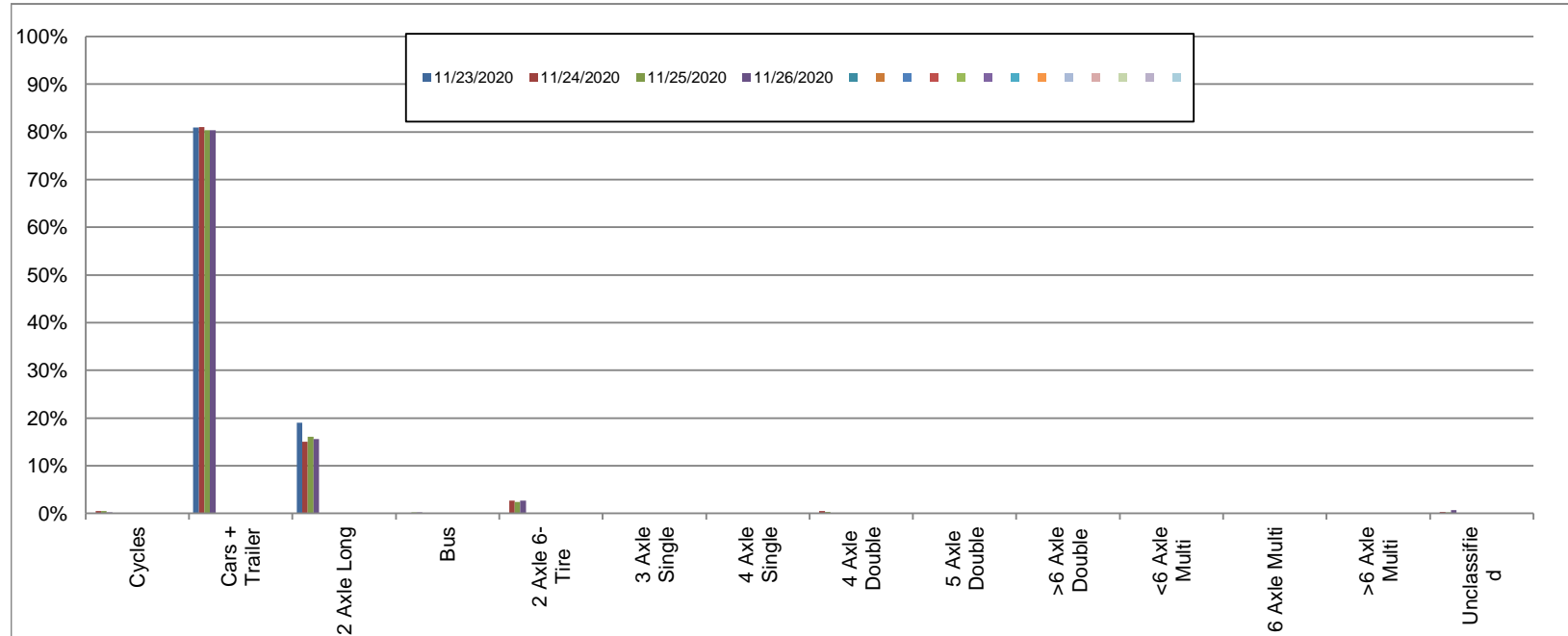
Eastbound

November 23, 2020 to November 26, 2020

Daily Class Bin Percentages															Daily Class Bin Volumes														
Bin #	1	2	3	4	5	6	7	8	9	10	11	12	13	14	1	2	3	4	5	6	7	8	9	10	11	12	13	14	Total Volume
Bin Class	Cycles	Cars + Trailer	2 Axle Long	Bus	2 Axle 6-Tire	3 Axle Single	4 Axle Single	4 Axle Double	5 Axle Double	>6 Axle Double	<6 Axle Multi	6 Axle Multi	>6 Axle Multi	Unclassified	Cycles	Cars + Trailer	2 Axle Long	Bus	2 Axle 6-Tire	3 Axle Single	4 Axle Single	4 Axle Double	5 Axle Double	>6 Axle Double	<6 Axle Multi	6 Axle Multi	>6 Axle Multi	Unclassified	
11/23/2020	0.0%	81.0%	19.0%	0.0%	0.0%	0.0%	0.0%	0.0%	0.0%	0.0%	0.0%	0.0%	0.0%	0.0%	0	17	4	0	0	0	0	0	0	0	0	0	0	0	21
11/24/2020	0.4%	81.0%	15.1%	0.1%	2.7%	0.1%	0.0%	0.4%	0.0%	0.0%	0.0%	0.0%	0.0%	0.3%	7	1269	236	1	42	1	0	7	0	0	0	0	0	4	1567
11/25/2020	0.5%	80.3%	16.1%	0.2%	2.4%	0.0%	0.0%	0.3%	0.0%	0.0%	0.0%	0.0%	0.0%	0.2%	8	1262	253	3	38	0	0	4	0	0	0	0	0	3	1571
11/26/2020	0.2%	80.3%	15.5%	0.2%	2.7%	0.1%	0.1%	0.1%	0.0%	0.0%	0.0%	0.0%	0.0%	0.7%	4	1338	259	4	45	2	1	2	0	0	0	0	0	11	1666
Total	0.4%	80.5%	15.6%	0.2%	2.6%	0.1%	0.0%	0.3%	0.0%	0.0%	0.0%	0.0%	0.0%	0.4%	19	3886	752	8	125	3	1	13	0	0	0	0	0	18	4825

Class Data Summary

Bin #	1	2	3	4	5	6	7	8	9	10	11	12	13	14	Total Volume
Bin Class	Cycles	Cars + Trailer	2 Axle Long	Bus	2 Axle 6-Tire	3 Axle Single	4 Axle Single	4 Axle Double	5 Axle Double	>6 Axle Double	<6 Axle Multi	6 Axle Multi	>6 Axle Multi	Unclassified	Total Volume
Survey Total	19	3886	752	8	125	3	1	13	0	0	0	0	0	18	4825
% Total	0.4%	80.5%	15.6%	0.2%	2.6%	0.1%	0.0%	0.3%	0.0%	0.0%	0.0%	0.0%	0.0%	0.4%	100%
Accumulated %	0.4%	80.9%	96.5%	96.7%	99.3%	99.3%	99.4%	99.6%	99.6%	99.6%	99.6%	99.6%	99.6%	100.0%	
Inv. Accum. %	99.6%	19.1%	3.5%	3.3%	0.7%	0.7%	0.6%	0.4%	0.4%	0.4%	0.4%	0.4%	0.4%	0.0%	



Classification Descriptions

Bin #	Bin Description
1	Motorcycles
2	Passenger cars, including those with recreational trailers
3	2-axle pick-ups, vans, and RVs, including those with recreational trailers
4	Buses
5	2-axle, 6-tire single units
6	3-axle single units
7	4-axle single units
8	3-axle or 4-axle double unit
9	5-axle double unit
10	6-, 7-, or 8-axle double unit
11	5-axle multiple unit
12	6-axle multiple unit
13	7-or-more-axle multiple unit
14	Vehicles that could not be classified

Site notes: